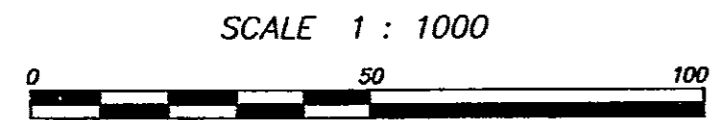


Statutory Right Of Way Plan Over Parts Of Lot A Plan LMP 22854
And Lot 2 And Lot 4 Plan LMP 22853 - All Of District
Lots 76 And 77 Group 1 New Westminster District
B.C.G.S. 92G.026

Plan LMP 22856

Pursuant To Section 113 Of The Land Title Act

Deposited In The Land Title Office
At New Westminster, B.C.
This 25 Day Of April 1995



10-301

[Signature]
ASSISTANT DEPUTY Registrar

Ref. No. B511601

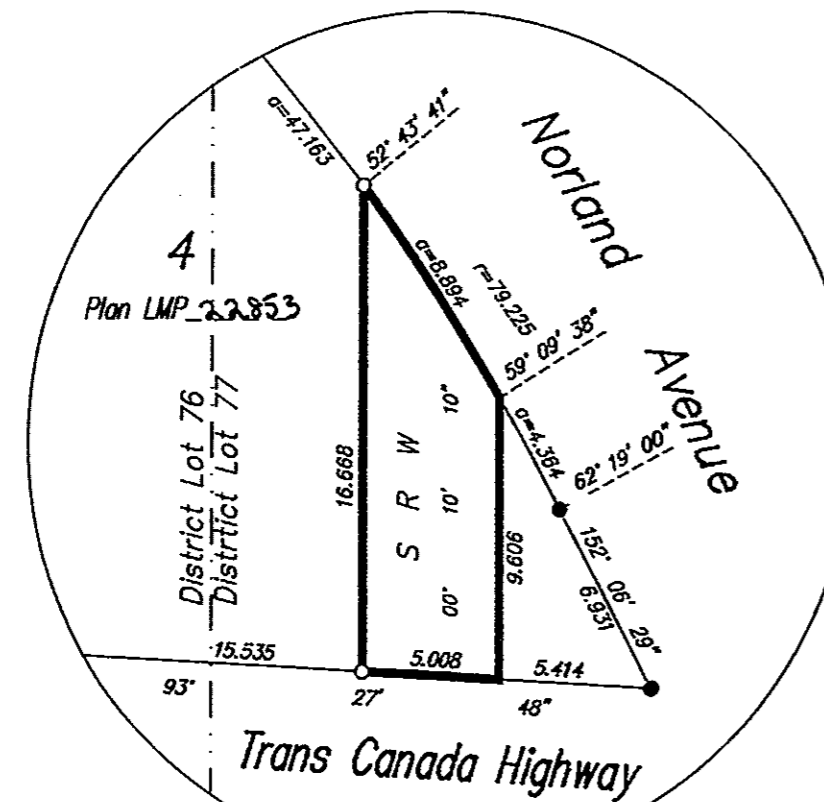
This Plan Lies Within The Greater Vancouver Regional District
Integrated Survey Area No.25 (Burnaby)

This Plan Shows Ground Level Measured Distances
Prior To Computation Of U.T.M. Coordinates,
Multiply By Combined Factor 0.9999958

LEGEND:

Grid Bearings Are Derived From Observations Between
Control Monuments DTS 357 And DTS 358
All Distances Are In Metres And Decimals Thereof

- ⊙ Control Monument Found
- Standard Iron Post Found
- Standard Iron Post Set

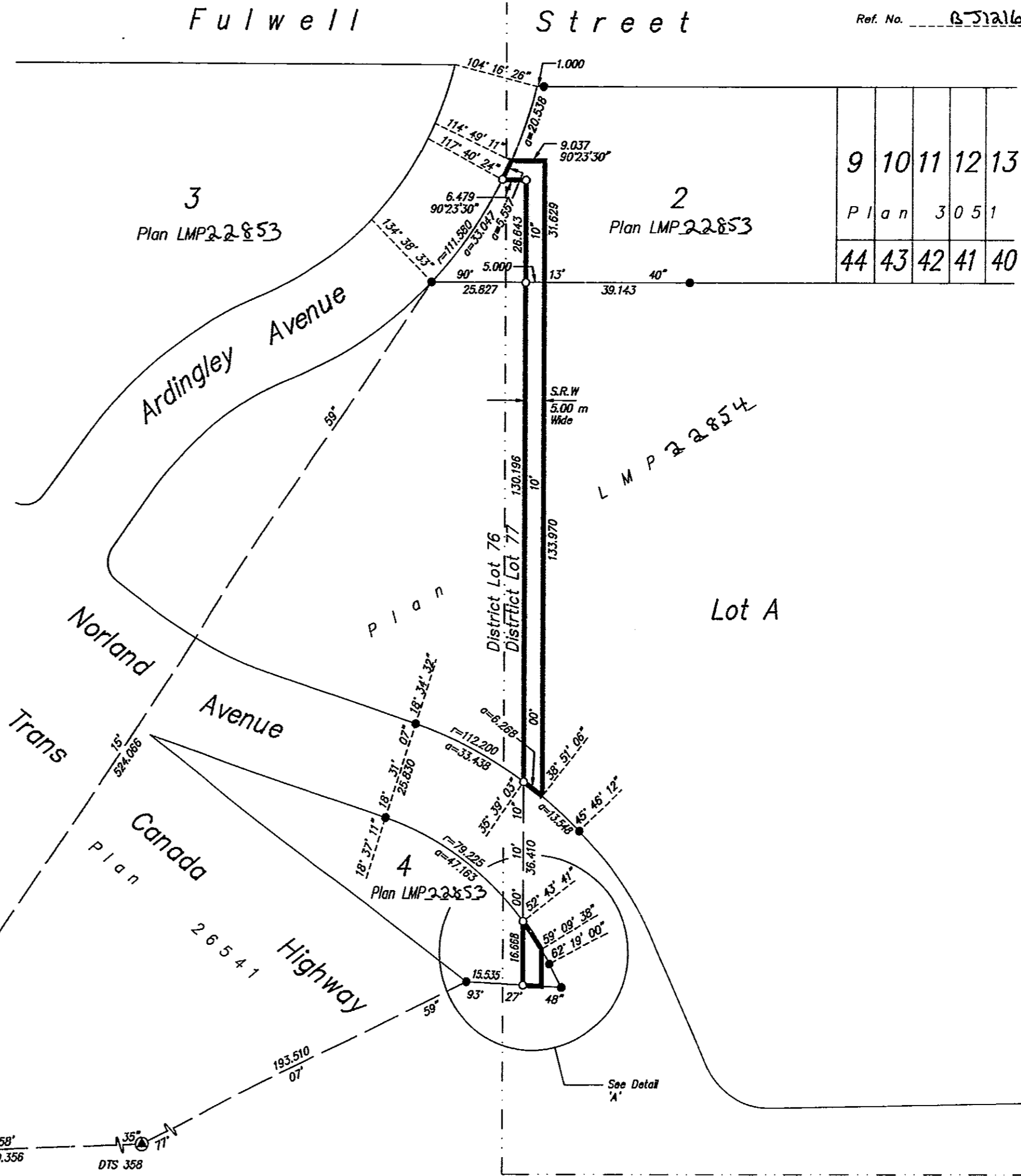


Detail 'A'
N.T.S.

Book Of Reference	
Description	Area (m2)
Lot 2 Plan LMP 22853	184
Lot A Plan LMP 22854	660
Lot 4 Plan LMP 22853	66

I, L. Achtemichuk, A British Columbia Land Surveyor,
Of Surrey, British Columbia, Certify That I Was
Present At And Personally Supervised The Survey
Represented By This Plan, And That The Survey And
Plan Are Correct. The Survey Was Completed On
The 29th Day Of March 1995

[Signature] B.C.L.S.



9	10	11	12	13
Plan 3051				
44	43	42	41	40